

COPTHORNE HOTEL CAMERON



Valid from 02 Jan - 31 Mar 2020

Superior	Adult			Child		Extension		
	Single	Twin	3rd Adult	CWB	CNB	Sgl / Twin	Extra Bed	CNB
Sun - Thur	200	160	160	154	124	95	40	13
Fri & Sat / School Holidays	240	180	170	164	134	125		
Peak (07, 08 Feb)	390	310	270	264	234	165		
Super Peak (23 Jan - 01 Feb)	430	350	310	304	274	175		

Upgrade to Deluxe - Top-up S\$25 Per Room Per Night

2 Bedroom Apartment	Adult			Child		Extension		
	Triple	Quad	5th Adult (Mattress)	CWB (Mattress)	CNB	Trp / Quad	Extra Bed (Mattress)	CNB
Sun - Thur	170	160	160	154	124	185	40	13
Fri & Sat / School Holidays	200	190	170	164	134	245		
Peak (07, 08 Feb)	340	310	270	264	234	335		
Super Peak (23 Jan - 01 Feb)	380	350	310	304	274	355		

School Holidays: 14 - 22 Mar

Room Surcharge: S\$15/Room/Night | S\$25/Apartment/Night (14 - 22 Mar)

Package Include:

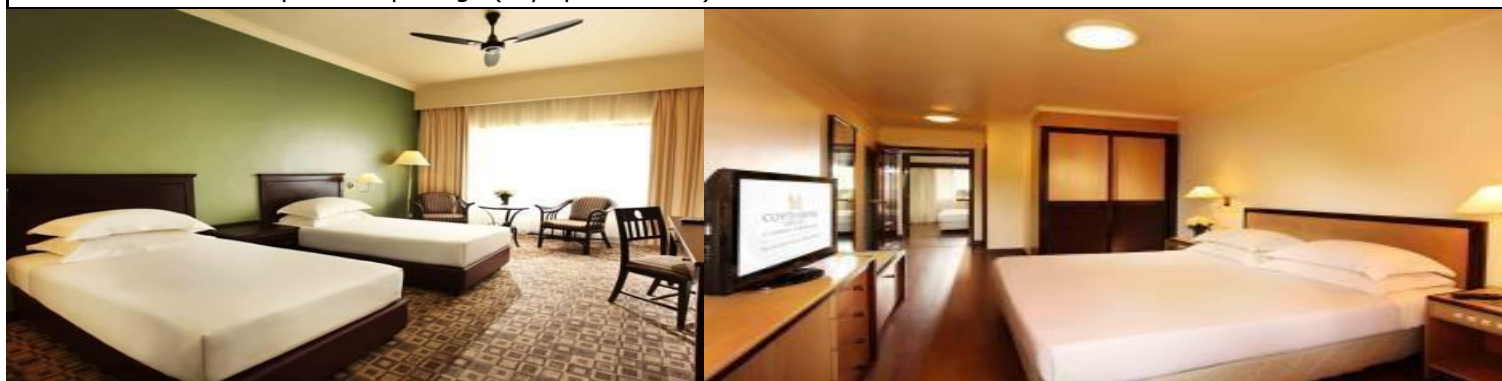
Tour code: CAMFE

- ~ Two way coach transfer Singapore - Cameron Highlands - Singapore by SVIP 26 Seaters Coach
- ~ One night accommodation at Copthorne Hotel Cameron Highlands
- ~ Hotel Buffet Breakfast

Package Exclude:

- ~ Tourism Tax: MYR10 per room per night(Pay upon check-in)

Update by JT, 29 Nov



Coach Schedule

Singapore - Cameron Highlands	2230HRS	Check in@Beach Road The Plaza, #B1-307/308/309 by 2200HRS (Beside 7-Eleven)
Cameron Highlands (Via KL) - Singapore	1000HRS	Assemble@Hotel Lobby 30 Minutes Before Departure

[Click here to Submit Enquiry](#)

(WTS - Jan - Mar 2020)